

Features

Series:	T
Type:	20
Code:	07.225.034.11
Description:	T201210ENC12C12
Customer's code:	-
Colour:	Black

Last drawing

Index: - Date: -

Application

-

Driveline data

X	1 3/8" Z6 DIN 9611
Y	1 3/8" Z6 DIN 9611
E	1085
I	1100
P	1020

Overlap

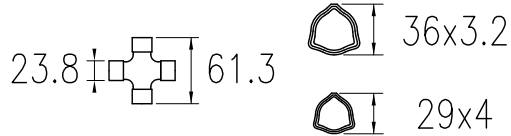
	Steel tubes	Guard
Max.	1065	1000
Min.	341	276

Greasing point

1)	-
2)	-

The dimensioning is cross to cross

Cross and tubes




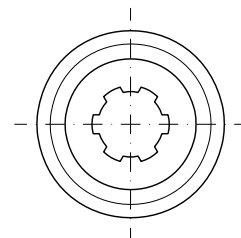
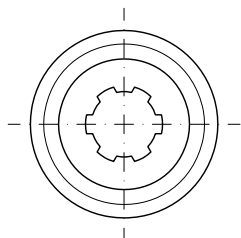
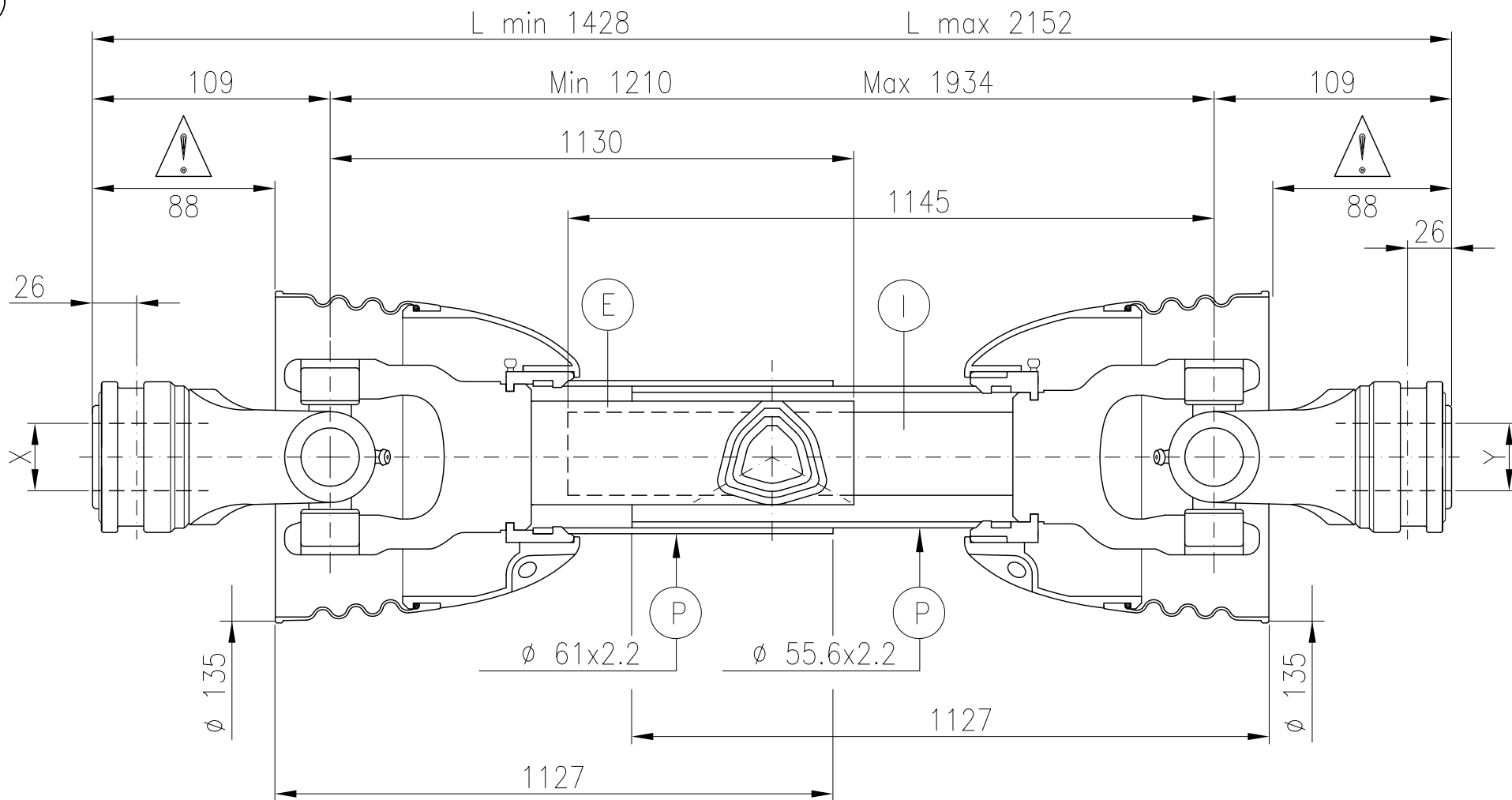
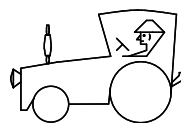
End fittings	Max. torque
Tractor Cod: C12	-
Implement Cod: C12	-

Notes:

CE CERTIFIED

Warning !

Sections of driveline marked  are not shielded and must be shielded by an interactive guarding system. COMER spa declines responsibility if proper guards are not provided or maintained.



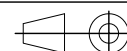
Data 540 r.p.m.

KW	CV	Nm.	in.lb.
15	21	270	2400

Data 1000 r.p.m.

KW	CV	Nm.	in.lb.
23	31	220	1950

1100 min.⁻¹
r.p.m. max.



Data for only critical velocity

	540 r.p.m.	1000 r.p.m.
Max.	1934	1560
L max.	2142	1768

Checked:

Signed by: A.Sa.

Customer:

-

Date: 07-09-20

Continuous operation data and conditions, working angle 5°, average life 1000 hours